



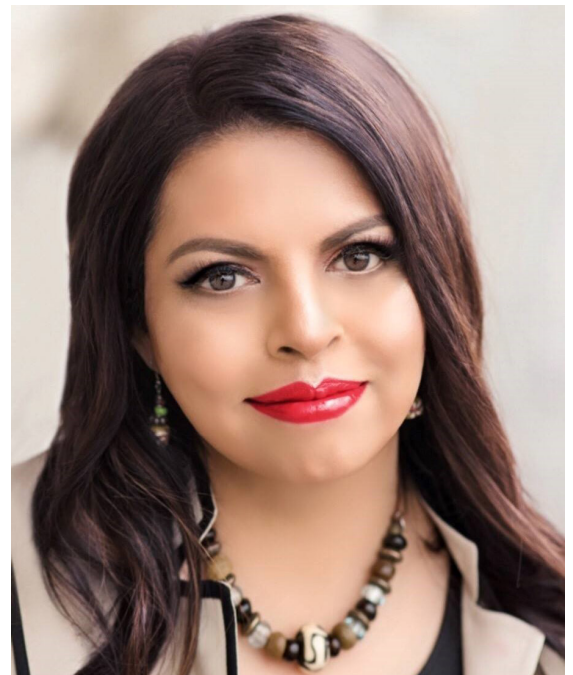
WORKSHOP IN METHODS + GRADUATE MENTORING CENTER

Culturally Congruent Critical and Contemplative Qualitative Research

Dr. Kakali Bhattacharya

Professor, Kansas State University

Often when we engage in qualitative research, we are focused more on the technocratic approach to “doing” qualitative research. In this workshop we will move away from the technocratic ways of designing and executing qualitative research to an engagement in criticality and contemplative orientations. How might your values, beliefs, intentions, histories, experiences, cultural background, career aspirations, stuck places, and places of stillness come into being when you engage in qualitative research? What are the implications for relationship building with participants, research design, data collection, analysis, and representation? What rules do you observe and what could you break? What might be your ethical orientation and positionality as a researcher? How much of yourself should be revealed in your study? What self excavation is necessary to conduct in one’s particular study? We will explore these questions in the workshop through deep and interactive engagement with this ideas and identify productive tensions and their limits and possibilities.



Friday
March 29, 2019
2-4pm



**Social Science
Research Commons
Grand Hall
Woodburn Hall 200**



go.iu.edu/wim

Social Science Research Commons & Karl F. Schuessler Institute for Social Research